

# THRII®TAP+ HAND WASH DRYER INSTALLATION INSTRUCTIONS

Thrii-Tap+ W-FF

ISSUE 3



## 1 NOTICES

Please ensure you read these notes before you start to install the product

- All electrical work must be carried out by a qualified electrician and should be installed in accordance with the current Nationally Approved Regulations (For UK I.E.E.)
- This appliance must be earthed.
- Do not switch on electric supply to unit with control module covers removed.
- Risk of electric shock, serious injury or death. Only qualified personnel should remove the cover of the control module when powered up.
- Refer to Product Manual for full installation details at <https://thriitap.com/>

## 4 WALL PREPARATION

1. The front fix mounting method may be used when chasing the services for the tap into the wall. If this is the case carefully route the hoses into the chased opening (54mm wide x 90mm deep) see figure 3.
2. Using the wall mounting plate as a template secure four wall anchors or suitable equivalent into the wall substrate. Secure the mounting plate into position ensuring that it is centralised to the basin and level (see figure 4 & 5).

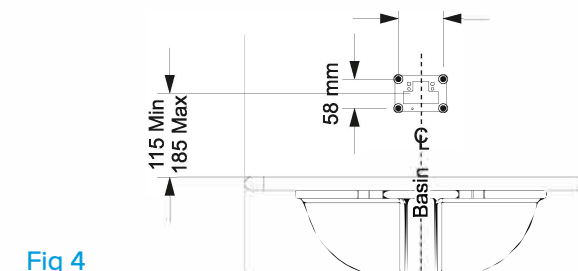


Fig 4

Fig 3

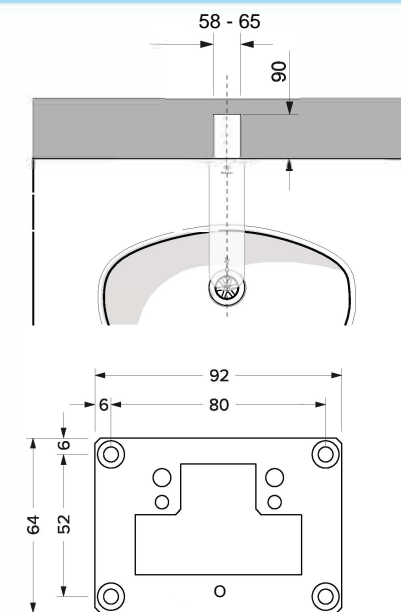
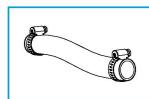
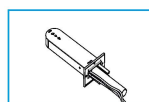


Fig 5

## 2 PACKAGE CONTENTS

Your package should contain the following contents.  
If any of these items are missing please contact Wallgate for details see section 12.

- 1 Tap Head Assembly
- 1 Installation Instructions
- 1 Air hose – with 2 jubilee clips
- 2 Cable ties and earth cable.



- Sensor cable shroud
- 1 Soap Bracket
- 1 Control Module
- 1 Container of liquid soap (2.5 litres)

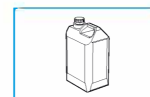
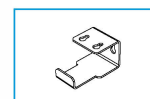


Fig 1

## 5 MOUNTING THE TAP HEAD

1. Carefully route the hoses into the chased opening (54mm wide x 90mm deep).
2. Lift off tap head lid by unscrewing M3 Torx screw on right hand side of tap body and 2x M4 monobloc fixings.
3. Mount the tap head into position on the mounting plate, feed the hoses through the plate opening and secure the tap into position using the two M6 fixing bolts. Use a 10mm spanner/socket to tighten bolts loosely hand tight.
5. Check the orientation of the tap head is correctly positioned over the basin. Also use a spirit level to check the tap head is level horizontally as this must be the case for optimum performance.

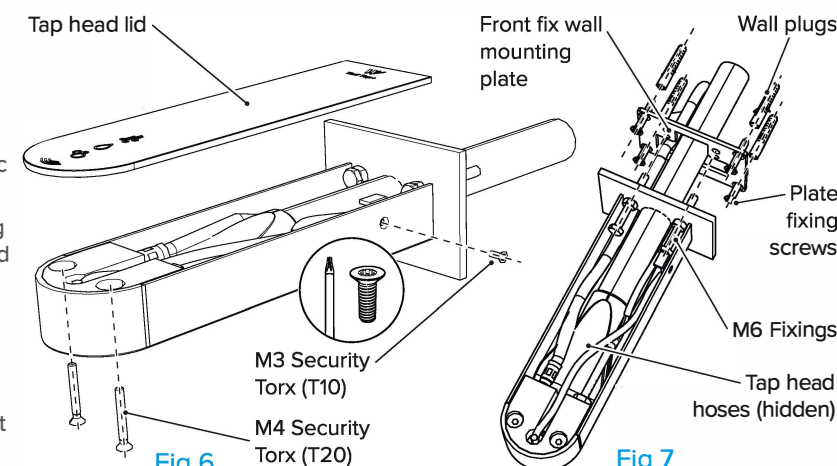


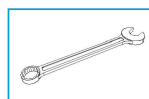
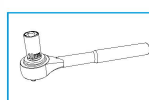
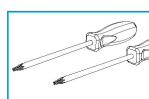
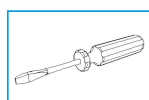
Fig 6

Fig 7

6. Tighten the fixings and reinstate the tap head cover and secure by tightening both the M4 and M3 torx screws.
7. Remove earth screw and shakeproof washers. Fit earth cable ring terminal between washers and tighten screw back into bracket to earth tap.

## 3 TOOLS REQUIRED

- Screwdrivers
- T10 & T20 Torx driver
- 10mm Socket
- 23mm spanner



- Drill
- Hole saw
- Tools/drill bits to suit wall and fixings
- Cleaning materials

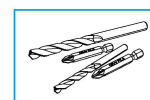
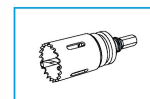


Fig 2

## 6 SOAP BRACKET MOUNTING

The soap hook can be installed remotely from the control module in a position convenient for access, and within space constraints. 0.6m of soap tube is supplied for connection between the soap bottle and the module.

The soap hook must be fastened to the wall with appropriate fasteners for the wall material (to be supplied by others).

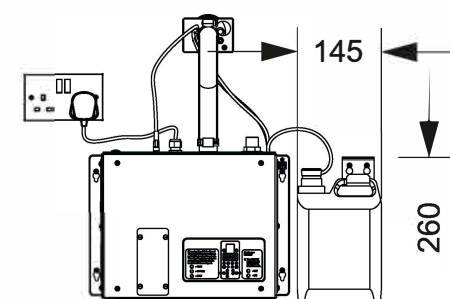


Fig 8

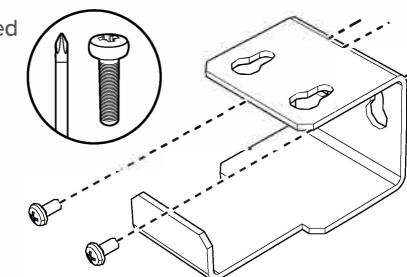
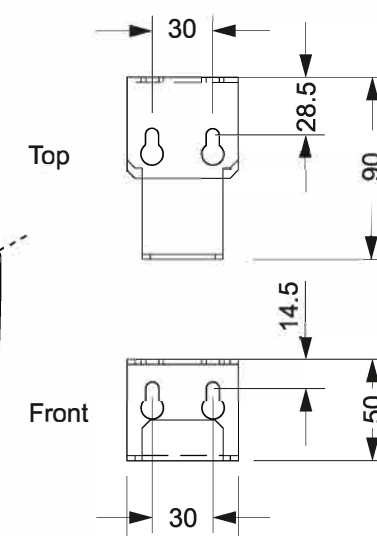


Fig 9



7

## CONTROL MODULE MOUNTING

The control module is to be mounted to a flat sturdy wall via the mounting tabs. These are bi-directional slotted for ease of installation regardless of the module's orientation.

1. Remove the module from the box.
2. Fasten to the wall using mounting hardware suitable for the wall material (to be provided by others). The wall must be robust enough to support the weight of the module. See figure 10 and 11.

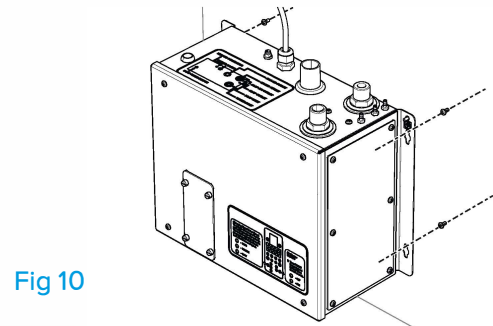


Fig 10

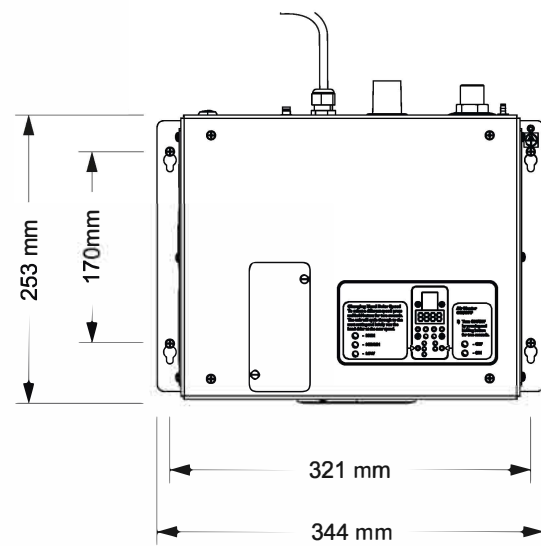


Fig 11

8

## TAP CONNECTION TO CONTROL MODULE

1. Attach the air hose into position on the module. Secure using the jubilee clips provided.
2. Connect the flexi hose to the module "water outlet" by hand. Tighten with a 23mm spanner (figure 13).
3. Connect the M8 sensor cable to "sensor connection" on module. Align pins, tighten by hand and secure the shroud using the fixing provided (figure 15).
4. Attach 2x soap hoses to the "soap and air outlets" on the module. Use 2x cable ties to secure soap tube onto outlet spigots (figure 14).
5. Fit the earth cable from the tap head bracket to the earthing point on the right hand bracket of the control module.

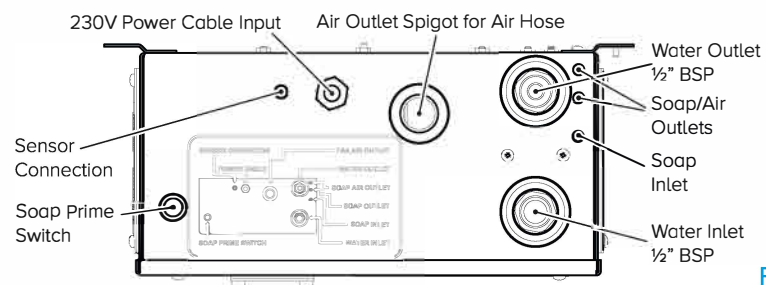


Fig 11

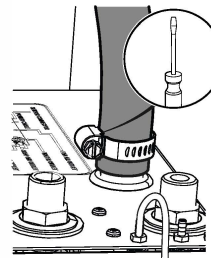


Fig 13

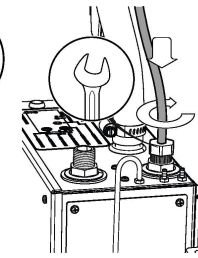


Fig 14

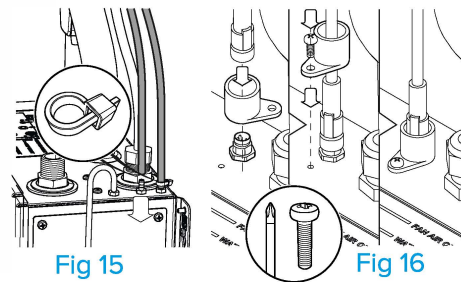


Fig 15

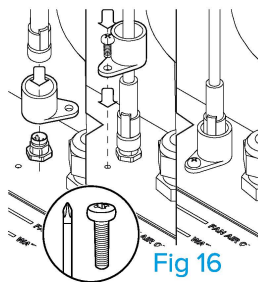


Fig 16

9

## CONTROL MODULE CONNECTION TO UTILITIES

The hand wash unit can be used with various water input methods with all internal components suitable for contact with water up to 60°C.

The water temperature is not controlled by the control module therefore a suitable temperature control system must be fitted before the module that is in line with local regulations.

Alternatively, the unit can be operated as cold water only, by directly connecting the module to a cold-water supply.

The unit should be fitted after an isolating valve to allow for ease of maintenance and installation.

1. To connect the module to the water supply simply screw on half a 1/2" BSP connector to the "water inlet" detailed in fig 12.
2. Ensure the module is connected to a main electrical supply via 13A socket or switched fuse spur.



Warning! All electrical work must be carried out by a qualified electrician and should be installed in accordance with the current nationally approved regulations.

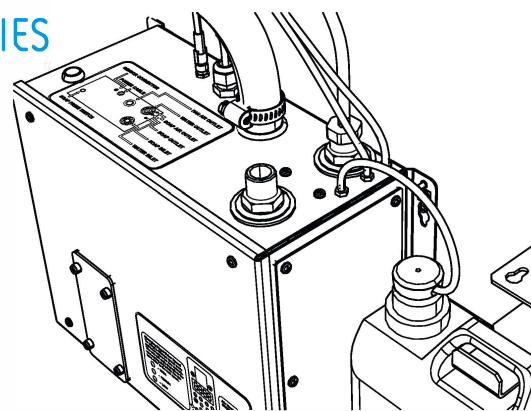


Fig 17

Water Supply	
Minimum Pressure	1 Bar / 100KPa / 14.5 psi
Maximum Pressure	10 Bar / 1000KPa / 145 psi
Electrical Power Requirement	
220 - 240V 50/ 60Hz Single phase	
0.9 kW / 13A UK Switched Socket	

10

## CONNECTING THE SOAP

1. Remove the soap container from the box.
2. Place the soap container onto the soap bracket to the right of the control module, ensuring the cap is outermost (See figure 18a).
3. Unscrew the cap from the soap container.
4. Replace cap with the push-fit cap pre-connected to the soap tube (See figure 18b).
5. Press the soap prime switch until soap is dispensed from the tap head (See figure 19).
6. Use the soap rocker switch to select the desired foam or liquid soap setting.
7. Replace the control module cover
8. The unit is now ready for operation.



**IMPORTANT!** Only use soap recommended by Wallgate

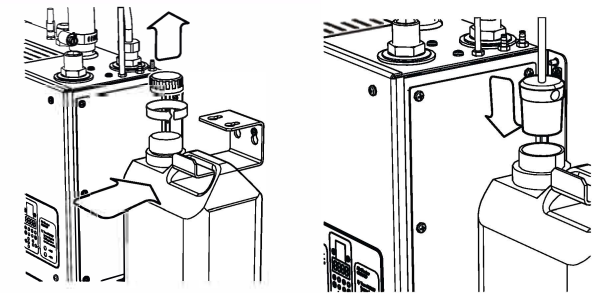


Fig 18a

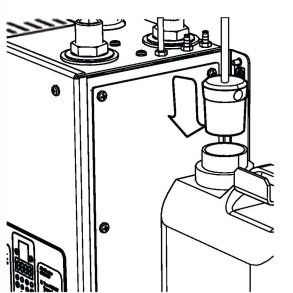


Fig 18b

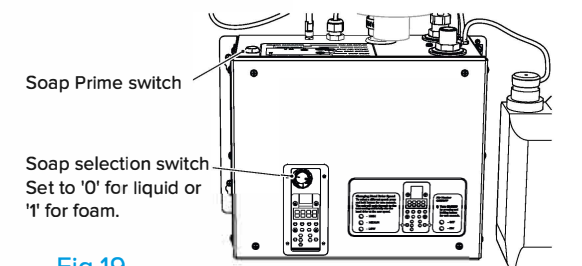


Fig 19

11

## COMMISSIONING/HANDOVER

1. Ensure the control module cover panels are securely fitted and the electrical plug is securely connected to the socket
2. Inspect all connections on the top of the unit to make sure the soap, water, air, and sensor connections are secure and seated correctly.
3. Fully open the mains water supply isolating tap. Check the incoming water connections for leaks.
4. Switch ON the power to the unit, this will power-up the Wallgate Thrii-Tap+ ready for use.
5. Upon initial power-up, the Wallgate Thrii-Tap+ automatically runs through a 15-second water calibration cycle.
6. Ensure no leaks have occurred around the connections between the control module and the tap head.
7. Check the wash & dry cycle operates correctly and repeat the cycle at least five times.
8. Check the sensor range with hands, if required this length can be adjusted using F68. Refer to the Product Manual for instructions.
9. Wipe sensor and nozzles using a soft cloth and non-abrasive cleaner and clean all surfaces

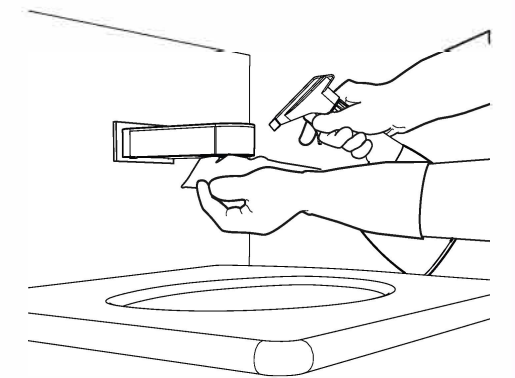


Fig 20

12

## CARE, MAINTENANCE AND REPAIR

Any service or repair work must be done by a qualified engineer. During the warranty period, the service or repair must only be done by a Wallgate engineer or appointed service agent. Refer to the Wallgate terms and conditions for warranty information.

Replacement soap can be purchased directly from Wallgate. See contact details below.

For information on cleaning, maintenance and spares, a concise product manual is available on our web site [www.wallgate.com](http://www.wallgate.com). Alternatively, you can contact Wallgate directly, see details below.



**Wallgate**  
ROBUST. INNOVATIVE. WASHROOMS

Wallgate Limited, Crow Lane, Salisbury, Wiltshire SP2 0HB, England Wallgate is a registered trademark of Wallgate Limited.